



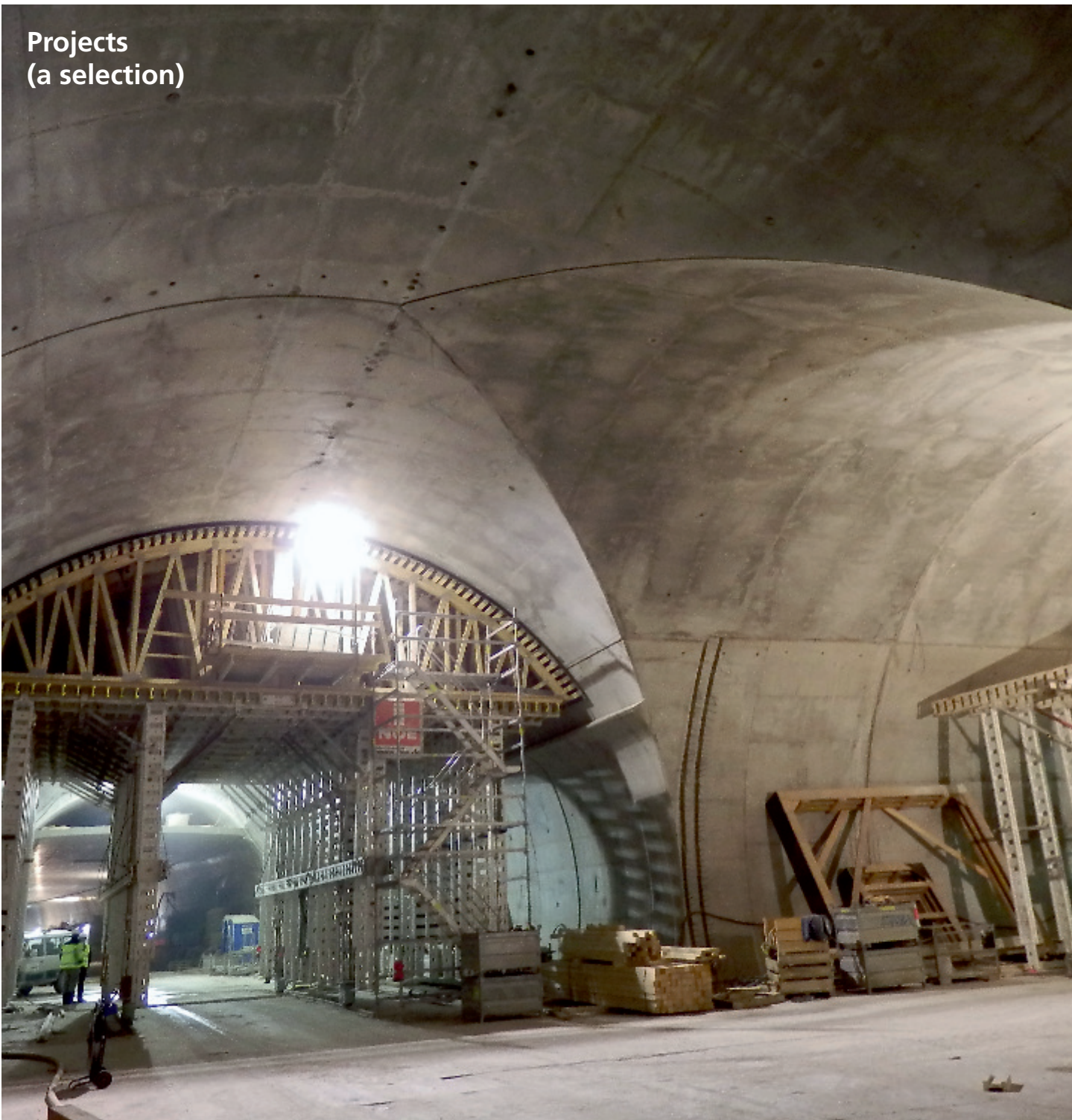
THE FORMWORK



# NOE<sup>®</sup>tec

System formwork

Projects  
(a selection)





# Gmünder Einhorn-Tunnel, Schwäbisch Gmünd Cut-and-cover construction west



## Deck formwork carriage cut-and-cover construction

- **Contracting consortium:**  
ARGE Tunnel Schwäbisch  
Gmünd consisting of:
  - Ed. Züblin AG
  - Baresel GmbH
  - G. Hinteregger & Söhne  
Baugesellschaft m.b.H.
  - ÖSTU-STETTIN  
Hoch- und Tiefbau GmbH
- **Other NOE systems used:**  
NOEtop, NOE LS 200,  
NOE LG-W 200
- **Completion 2008-2013**



Further information can  
be found on the Internet  
by scanning this QR code





# Gmünder Einhorn-Tunnel, Schwäbisch Gmünd Emergency bays, ventilation galleries, fan niches



## Deck formwork carriage, traditional tunnelling construction

- **Contracting consortium:**  
ARGE Tunnel Schwäbisch Gmünd consisting of:
  - Ed. Züblin AG
  - Baresel GmbH
  - G. Hinteregger & Söhne Baugesellschaft m.b.H.
  - ÖSTU-STETTIN Hoch- und Tiefbau GmbH
- **Other NOE systems used:**  
NOEtop,  
NOEtop support bracket
- **Completion:**2008-2013



## Fan niches, cut-and-cover construction west

Further information can be found on the Internet by scanning this QR code





# Gmünder Einhorn-Tunnel, Schwäbisch Gmünd Emergency bays, ventilation galleries, fan niches





# Gmünder Einhorn-Tunnel, Schwäbisch Gmünd Emergency bays, ventilation galleries, fan niches





# Gmünder Einhorn Tunnel, Schwäbisch Gmünd Cut-and-cover construction east



## Deck formwork carriage, cut-and-cover construction

- **Contracting consortium:**  
ARGE Tunnel Schwäbisch  
Gmünd consisting of:
  - Ed. Züblin AG
  - Baresel GmbH
  - G. Hinteregger & Söhne  
Baugesellschaft m.b.H.
  - ÖSTU-STETTIN  
Hoch- und Tiefbau GmbH
- **Other NOE systems used:**  
NOEtop
- **Completion:** 2008-2013



Further information can  
be found on the Internet  
by scanning this QR code





# Hollmuth-Tunnel, Neckargemünd



Formwork carriages,  
traditional tunnelling  
construction

- Main contractor:  
Baresel GmbH
- Completion: 2008-2009





# Wagenladungsstrasse Tunnel Milaneo Stuttgart



Adjustable-height  
deck formwork carriages

- Main contractor:  
Ed. ZÜBLIN AG
- Completion: 2012-2013





# Tunnel Wagenladungsstraße, Milaneo Stuttgart





# Nagold-Iselshausen Tunnel



Tunnel formwork carriage,  
traditional tunnelling  
construction, partly cut-and-cover  
construction

- Main contractor:  
Baresel GmbH
- Completion: 2009-2010





# Retaining wall Heilbronn light railway Neckarsulm



## NOEtec Wall formwork carriage

- Main contractor:  
Harsch Bau GmbH & Co. KG
- Completion: 2012





# Schulberg Tunnel, A44 motorway Hessisch-Lichtenau



Tunnel roof formwork  
Tunnel formwork carriage  
for walls

- Main contractor:  
Alpine BeMo Tunnelling GmbH  
Niederlassung West
- Completion 2009-2010







Two tunnel formwork carriages, traditional tunnelling construction, reinforcement carriage

- Main contractor: ED. ZÜBLIN AG
- Other NOE systems used: NOEtop
- Completion: 2012





# Stuttgart 21 PFA 1.5 Lot 4 Urban Railway Stuttgart-Nord Station



## Deck formwork carriage cut-and-cover construction

- **Main contractor:**  
Max Bögl GmbH + Co. KG
- **Other NOE systems used:**  
NOEtop, NOE support bracket
- **Completion:** 2014





# SPP Pilot Plant Schwarze Pumpe, Spremberg



## NOEtec Wall formwork

- Main contractor:  
Baresel GmbH
- Other NOE systems used:  
NOEtop, NOEalu L, NOE AB 300
- Completion: 2008-2009





# Refurbishment Nittel Tunnel, Trier



Tunnel formwork carriages,  
traditional tunnelling  
construction,  
deck formwork carriage,  
cut-and-cover construction,  
reinforcement carriage

- Main contractor:  
Baresel GmbH
- Other NOE systems used:  
NOEtop
- Completion: 2009-2010





# Refurbishment Nittel Tunnel, Trier







## Deck formwork carriage cut-and-cover construction

- Main contractor: SMU-155
- Other NOE systems used: NOEtop
- Completion: 2013





# Moscow Metro, Ramenki Station

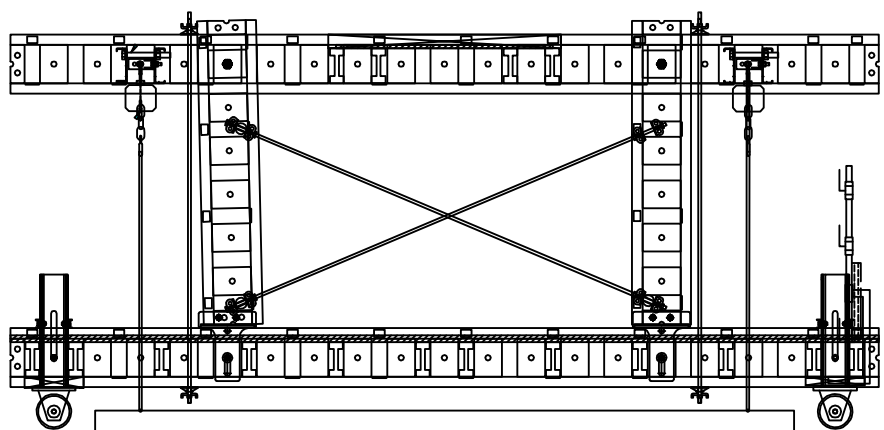
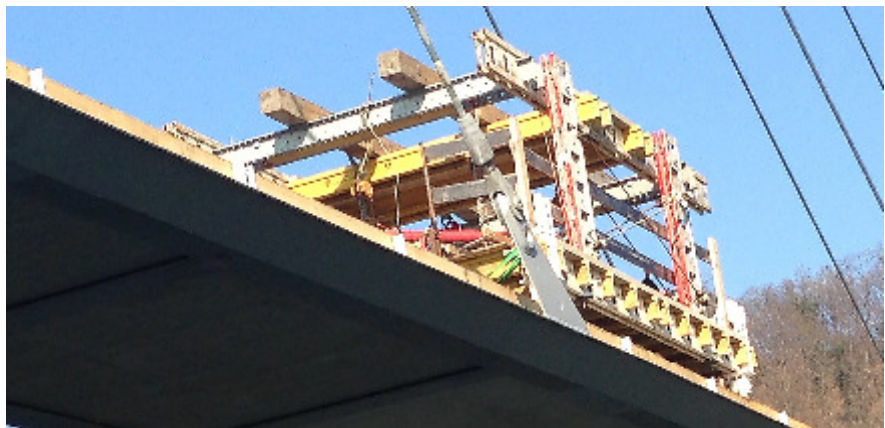






Transport carriage for precast concrete units

- Main contractor:  
WOLFF & MÜLLER  
Ingenieurbau GmbH –  
Niederlassung Brückenbau
- Completion: 2013





# Gibbelin Tunnel, Solothurn, Switzerland



## Deck/wall formwork cut-and-cover construction

- Contracting consortium:
  - Frutiger AG
  - Sutter AG
  - König AG
  - Galli AG
- Completion: 2006





# Westside, Shopping and Lifestyle Centre, Bern, Switzerland



## NOEtec Wall formwork

- **Architect:**  
Daniel Libeskind
- **Main contractor:**  
Wirz AG
- **Completion:** 2006-2007











**THE FORMWORK**



## **NOE-Schaltechnik Georg Meyer-Keller GmbH + Co. KG**

Kuntzestr. 72, 73079 Suesen, Germany  
T + 49 7162 13-1  
F + 49 7162 13-288  
info@noe.de  
www.noe.de  
www.noeplast.com

### **Austria**

NOE Schaltechnik  
www.noe-schaltechnik.at  
noe@noe-schaltechnik.at

### **Belgium**

NOE Bekistingtechniek N.V.  
www.noe.be  
info@noe.be

### **Brazil**

Mills do Brasil  
Estruturas e Serviços Ltda.  
www.mills.com.br  
millsbr@cepa.com.br

### **Bulgaria**

NOE Schaltechnik  
www.noebg.com  
noe-bg@netbg.com

### **Croatia**

NOE oplatna tehnika d.o.o.  
www.noe.hr  
noe@noe.hr

### **France**

NOE France  
www.noe-france.fr  
info@noe-france.fr

### **Netherlands**

NOE Bekistingtechniek b.v.  
www.noe.nl  
info@noe.nl

### **Poland**

NOE PL Sp Zo.o.  
www.noe.com.pl  
noe@noe.com.pl

### **Russia**

NOE Moscow  
info@noe-moscow.ru

NOE St. Petersburg  
noe@sovintel.ru

### **Saudi Arabia**

NOE Global Trade Est.  
NOE - The Formwork  
www.noe.de  
jeddah@noe.de

### **Serbia**

NOE Sistemske Oplate d.o.o.  
www.noe-scg.com  
noe-scg@eunet.rs

### **Switzerland**

NOE Schaltechnik  
www.noe.ch  
info@noe.ch

### **Turkey**

NOE Beton Kalıpları A.Ş.  
www.noe.com.tr  
info@noe.com.tr